

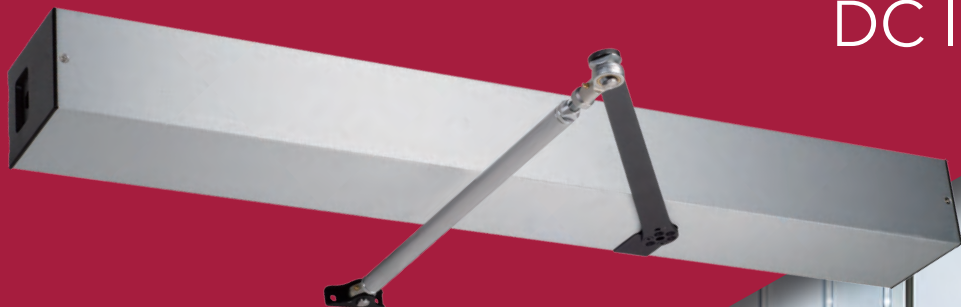
**PO**  
Series

ANSI Grade 1

Touchless Smart Lock

# Door Operator

DC Inverter



**klaccki**<sup>®</sup>  
life unlocked.





# The Touchless Solution

COVID-19 had changed the way how people interact with each other. The touchless solution integrates a variety of door hardware to minimize the touch points needed to access the door, promoting wellness and convenience to all.

## Lightweight and Heavy Duty

---

Weight less but works on 100lbs to 250lbs doors.

## Energy Saving

---

DC inverter motor provides a more energy efficient choice.

## Modular Design

---

Actuator, back plate, controller and most other parts are modular designed that makes installation a simplicity.





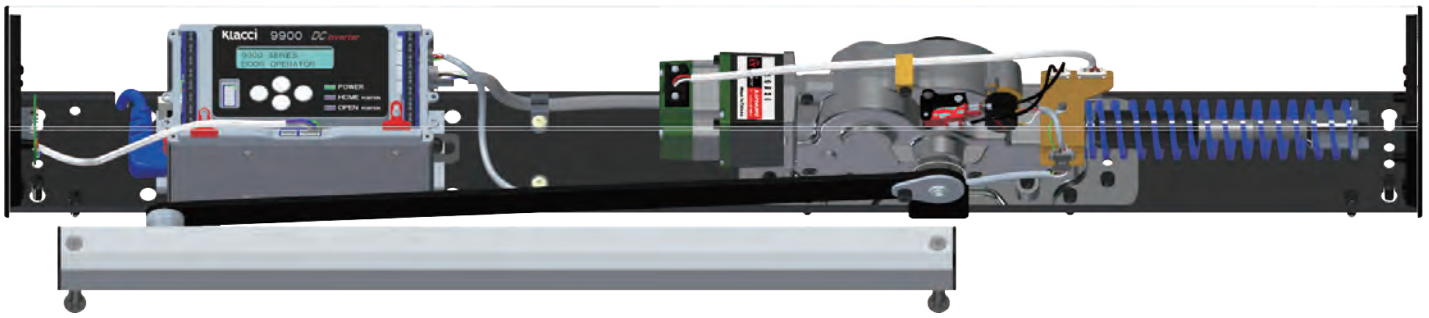
## Simple Setup

Easy to setup and adjust through mobile device's app interface.

## Optional Devices

Capable for connecting with external inhibit devices such as motion sensor, thermal sensor and infrared sensor to transform the door into a touchless opening control.

\* Klacci products integrate with other brands.



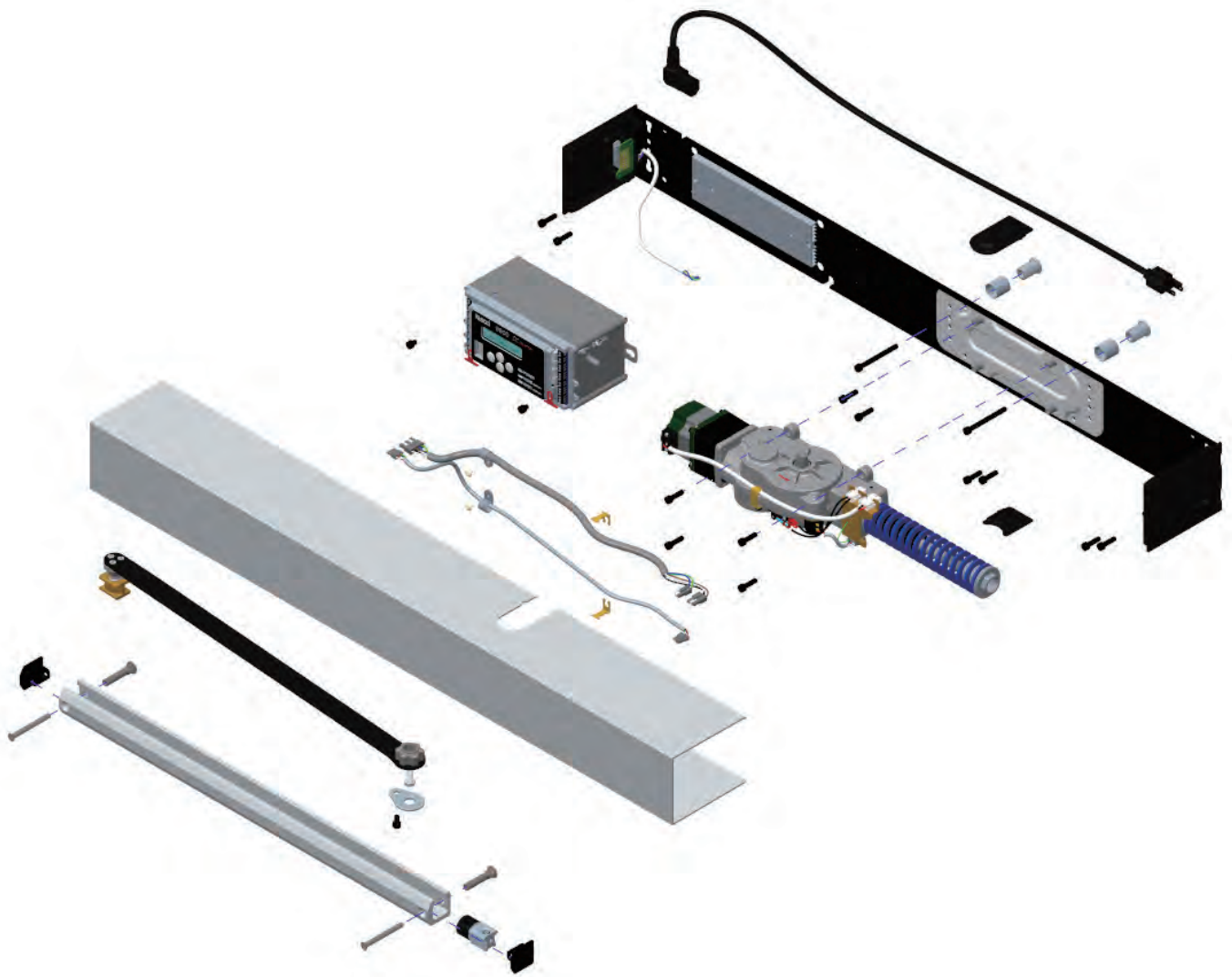
## Simple Setup

The open position, backcheck position, latch position and all other operation parameters are easily set up through the user friendly mobile device's app interface.\*

\* Please consult factory for availability







## Modular Design

Actuator and controller are modularly designed to install directly on the back plate without complex assembly process. The plug-and-go power source make the door operator ready to use after installation.



**PUSH Arm**



**PULL Arm & Track**



## Functions

### Hold Open Mode

- Opens and holds the door in full open with the option for a preset period of time or until power is turned off.

### Ventilation Mode

- Door opens automatically when triggered by alarm system for air or smoke flow until signal is ceased.

### Emergency Relay

- Overrides all existing activation and keep the door closed until the emergency signal is ceased.

### Latch Assist Mode

- Pulls in the door to assist the lock's latch engagement when the Door Operator is at closed position.

### Obstruction Mode

- Door stops when it detects obstruction when opening or closing.

### Open Delay Mode

- Delay opening of the door when it is needed by the door lock hardware.

### Disable Push Button

- Outside push button is disabled when activated.

### Power Close Mode

- Light amount of power is applied to assist the closing when the door is between 10° and 0° position.

### Obstruction Detector

- Detects obstruction presence for when the Door Operator is at open or closed position.

### Push Open Mode

- The operator opens the door to full-open position when manual push force is detected on the door.

### Mode Selector

- On - Allows signal inputs
- Off - Disables all signal inputs except Ventilation Mode
- Hold Open Mode - Opens and Holds the door in full open.

### Vestibule Delay Mode

- First door and second door opens in sequential order with second door in delay. Delay time of the second door is adjustable.

### Door Closer Mode

- Works as a door closer when electric power is turned off.



## Specifications

### Electrical Data

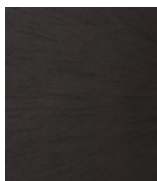
- Power input 110~240 VAC, 50/60Hz
- Current draw 1A
- Power output 24VDC @ 0.5A max draw

## Finishes



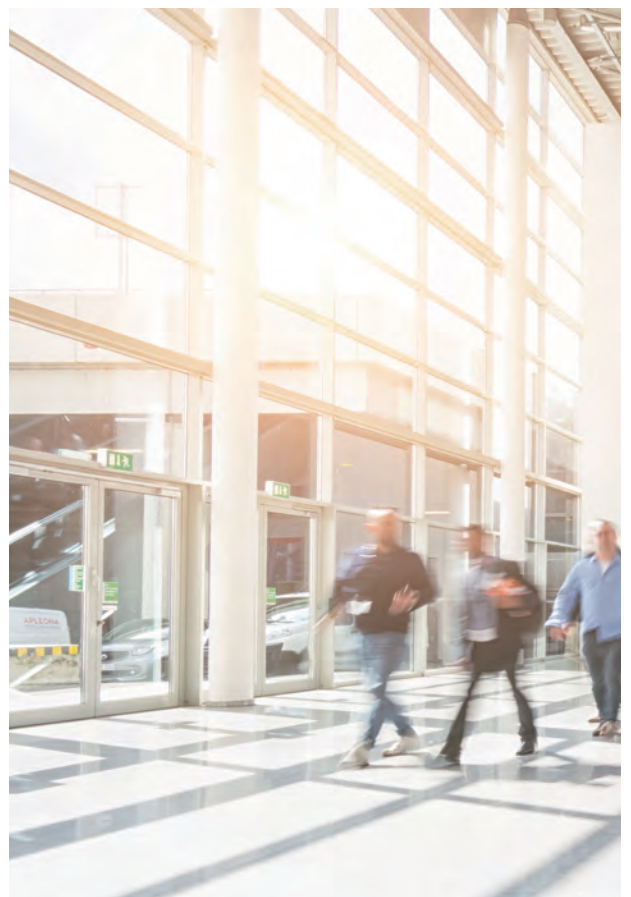
628 (US28)

Satin Aluminum,  
Clear Anodized



711 (US19)

Flat Black  
Anodized





[www.klacci.com](http://www.klacci.com)

#### Headquarters and Operation Office

##### I-TEK Metal Manufacturing Co., Ltd.

📍 18 Gungye 3rd Road, Annan,  
Tainan 70955, Taiwan.



**T** 886 6 3840722

**F** 886 6 3840715

**E** [sd.klacci@gmail.com](mailto:sd.klacci@gmail.com)

[sd@klacci.com](mailto:sd@klacci.com)

[sd@iteklock.com.tw](mailto:sd@iteklock.com.tw)

#### Global Office

##### KLACCI Inc.

📍 California, USA

📍 Nevada, USA

**T** +1 (720) 675-5677

**E** [sd@klacci.com](mailto:sd@klacci.com)

[sd.klacci@gmail.com](mailto:sd.klacci@gmail.com)